

Measure Spotlight: Donation Rate

Through a rigorous and extensive research process, AOPPO, in collaboration with 53 OPOs, and a third-party research organization, Econometrica, Inc., have developed new potential quality measures to support the organ donations process.

version June 2026

Donation Rate

Rate of the number of organ donors to the potential donors in an Organ Procurement Organization's (OPO's) donation service area (DSA) in a calendar year

Purpose

This measure is important because it reflects how well the OPO is effectively communicating across the transplant system. This measure tells us how often patients with no contraindications to donation become organ donors.

Rate Calculation

Number of donors in an OPO's DSA in a calendar year

Number of individuals in the potential donor population in an OPO's DSA in a calendar year

— Rate of organ donors per 100
— potential donor population

For the detailed calculation procedure, please reference the applicable measure factsheet and Standard Operating Procedure (SOP).

How Donation Rate Should Be Used

It should be used for general planning purposes.

What Donation Rate Shows

It measures the outcome of the donation referral process.

- The rate of actual donations.
- The potential donor population.

What It Does Not Show

It does not show the factors contributing to the outcome.

- Who contributes to the decision not to donate.
- Why donation doesn't happen.

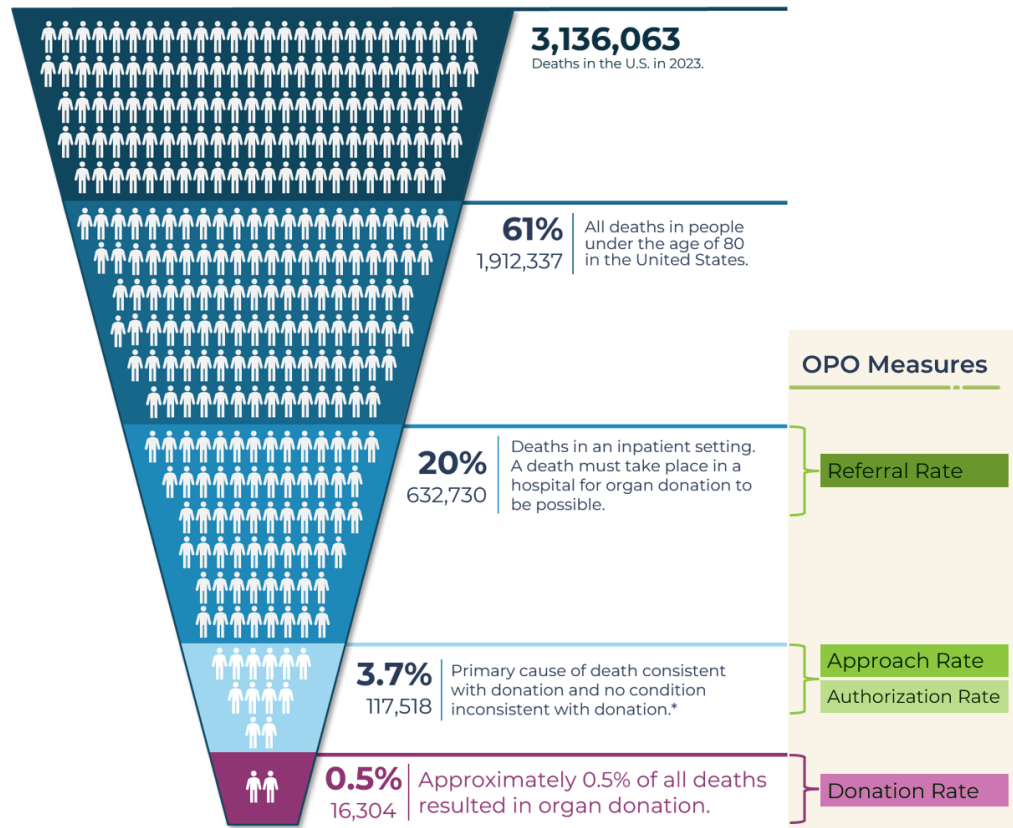
Why Donation Doesn't Happen

Even when the patient or donor family decide to donate, there are many factors that could lead to a donation not taking place.

- Death must occur in an inpatient setting.
- The primary cause of death must be consistent with donation and have no condition inconsistent with donation.

The Organ Donation Funnel

The number of potential organ donors is dependent on many factors. The funnel below shows how the number shrinks with different factors.



* According to death certificate data. Death certificates do not contain all information necessary to determine donor potential. All data is for 2023. Each icon represents approximately 10,000 people. Sources: Multiple Causes of Death file from the National Vital Statistics System at the U.S. Centers for Disease Prevention and Control. Scientific Registry of Transplant Recipients.